

ISSN 2518-1483 (Online),
ISSN 2224-5227 (Print)

2017 • 2

ҚАЗАҚСТАН РЕСПУБЛИКАСЫ
ҰЛТТЫҚ ҒЫЛЫМ АКАДЕМИЯСЫНЫҢ

БАЯНДАМАЛАРЫ

ДОКЛАДЫ

НАЦИОНАЛЬНОЙ АКАДЕМИИ НАУК
РЕСПУБЛИКИ КАЗАХСТАН

REPORTS

OF THE NATIONAL ACADEMY OF SCIENCES
OF THE REPUBLIC OF KAZAKHSTAN

ЖУРНАЛ 1944 ЖЫЛДАН ШЫҒА БАСТАҒАН

ЖУРНАЛ ИЗДАЕТСЯ С 1944 г.

PUBLISHED SINCE 1944



Бас редакторы
х.ғ.д., проф., ҚР ҰҒА академигі **М.Ж. Жұрынов**

Редакция алқасы:

Адекенов С.М. проф., академик (Қазақстан) (бас ред. орынбасары)
Боос Э.Г. проф., академик (Қазақстан)
Величкин В.И. проф., корр.-мүшесі (Ресей)
Вольдемар Вуйцик проф. (Польша)
Гончарук В.В. проф., академик (Украина)
Гордиенко А.И. проф., академик (Белорус)
Дука Г. проф., академик (Молдова)
Илолов М.И. проф., академик (Тәжікстан),
Леска Богуслава проф. (Польша),
Локшин В.Н. проф. чл.-корр. (Қазақстан)
Нараев В.Н. проф. (Ресей)
Неклюдов И.М. проф., академик (Украина)
Нур Изура Удзир проф. (Малайзия)
Перни Стефано проф. (Ұлыбритания)
Потапов В.А. проф. (Украина)
Прокопович Полина проф. (Ұлыбритания)
Омбаев А.М. проф. (Қазақстан)
Өтелбаев М.О. проф., академик (Қазақстан)
Садыбеков М.А. проф., корр.-мүшесі (Қазақстан)
Сатаев М.И. проф., корр.-мүшесі (Қазақстан)
Северский И.В. проф., академик (Қазақстан)
Сикорски Марек проф., (Польша)
Рамазанов Т.С. проф., корр.-мүшесі (Қазақстан)
Такибаев Н.Ж. проф., академик (Қазақстан), бас ред. орынбасары
Харин С.Н. проф., академик (Қазақстан)
Чечин Л.М. проф., корр.-мүшесі (Қазақстан)
Харун Парлар проф. (Германия)
Энджун Гао проф. (Қытай)
Эркебаев А.Э. проф., академик (Қырғыстан)

«Қазақстан Республикасы Ұлттық ғылым академиясының баяндамалары»
ISSN 2518-1483 (Online),
ISSN 2224-5227 (Print)

Меншіктенуші: «Қазақстан Республикасының Ұлттық ғылым академиясы» Республикалық қоғамдық бірлестігі (Алматы қ.)
Қазақстан республикасының Мәдениет пен ақпарат министрлігінің Ақпарат және мұрағат комитетінде 01.06.2006 ж.
берілген №5540-Ж мерзімдік басылым тіркеуіне қойылу туралы куәлік

Мерзімділігі: жылына 6 рет.
Тиражы: 2000 дана.

Редакцияның мекенжайы: 050010, Алматы қ., Шевченко көш., 28, 219 бөл., 220, тел.: 272-13-19, 272-13-18,
http://nauka-nanrk.kz_reports-science.kz

© Қазақстан Республикасының Ұлттық ғылым академиясы, 2017

Типографияның мекенжайы: «Аруна» ЖК, Алматы қ., Муратбаева көш., 75.

Главный редактор
д.х.н., проф., академик НАН РК **М. Ж. Журинов**

Редакционная коллегия:

Адекенов С.М. проф., академик (Казахстан) (зам. гл. ред.)
Боос Э.Г. проф., академик (Казахстан)
Величкин В.И. проф., чл.-корр. (Россия)
Вольдемар Вуйцик проф. (Польша)
Гончарук В.В. проф., академик (Украина)
Гордиенко А.И. проф., академик (Беларусь)
Дука Г. проф., академик (Молдова)
Илолов М.И. проф., академик (Таджикистан),
Леска Богуслава проф. (Польша),
Локшин В.Н. проф. чл.-корр. (Казахстан)
Нараев В.Н. проф. (Россия)
Неклюдов И.М. проф., академик (Украина)
Нур Изура Удзир проф. (Малайзия)
Перни Стефано проф. (Великобритания)
Потапов В.А. проф. (Украина)
Прокопович Полина проф. (Великобритания)
Омбаев А.М. проф. (Казахстан)
Отелбаев М.О. проф., академик (Казахстан)
Садыбеков М.А. проф., чл.-корр. (Казахстан)
Сатаев М.И. проф., чл.-корр. (Казахстан)
Северский И.В. проф., академик (Казахстан)
Сикорски Марек проф., (Польша)
Рамазанов Т.С. проф., чл.-корр. (Казахстан)
Такибаев Н.Ж. проф., академик (Казахстан), зам. гл. ред.
Харин С.Н. проф., академик (Казахстан)
Чечин Л.М. проф., чл.-корр. (Казахстан)
Харун Парлар проф. (Германия)
Энджун Гао проф. (Китай)
Эркебаев А.Э. проф., академик (Кыргызстан)

«Доклады Национальной академии наук Республики Казахстан»

ISSN 2518-1483 (Online),

ISSN 2224-5227 (Print)

Собственник: Республиканское общественное объединение «Национальная академия наук Республики Казахстан» (г. Алматы)

Свидетельство о постановке на учет периодического печатного издания в Комитете информации и архивов Министерства культуры и информации Республики Казахстан №5540-Ж, выданное 01.06.2006 г.

Периодичность: 6 раз в год.

Тираж: 2000 экземпляров

Адрес редакции: 050010, г.Алматы, ул.Шевченко, 28, ком.218-220, тел. 272-13-19, 272-13-18

<http://nauka-nanrk.kz> reports-science.kz

©Национальная академия наук Республики Казахстан, 2017 г.

Адрес типографии: ИП «Аруна», г.Алматы, ул.Муратбаева, 75

E d i t o r i n c h i e fdoctor of chemistry, professor, academician of NAS RK **M.Zh. Zhurinov****E d i t o r i a l b o a r d:****Adekenov S.M.** prof., academician (Kazakhstan) (deputy editor in chief)**Boos E.G.** prof., academician (Kazakhstan)**Velichkin V.I.** prof., corr. member (Russia)**Voitsik Valdemar** prof. (Poland)**Goncharuk V.V.** prof., academician (Ukraine)**Gordiyenko A.I.** prof., academician (Belarus)**Duka G.** prof., academician (Moldova)**Ilov M.I.** prof., academician (Tadjikistan),**Leska Boguslava** prof. (Poland),**Lokshin V.N.** prof., corr. member. (Kazakhstan)**Narayev V.N.** prof. (Russia)**Nekludov I.M.** prof., academician (Ukraine)**Nur Izura Udzir** prof. (Malaysia)**Perni Stephano** prof. (Great Britain)**Potapov V.A.** prof. (Ukraine)**Prokopovich Polina** prof. (Great Britain)**Ombayev A.M.** prof. (Kazakhstan)**Otelbayv M.O.** prof., academician (Kazakhstan)**Sadybekov M.A.** prof., corr. member. (Kazakhstan)**Satayev M.I.** prof., corr. member. (Kazakhstan)**Severskyi I.V.** prof., academician (Kazakhstan)**Sikorski Marek** prof., (Poland)**Ramazanov T.S.** prof., corr. member. (Kazakhstan)**Takibayev N.Zh.** prof., academician (Kazakhstan), deputy editor in chief**Kharin S.N.** prof., academician (Kazakhstan)**Chechin L.M.** prof., corr. member. (Kazakhstan)**Kharun Parlar** prof. (Germany)**Endzhun Gao** prof. (China)**Erkebayev A.Ye.** prof., academician (Kyrgyzstan)**Reports of the National Academy of Sciences of the Republic of Kazakhstan.****ISSN 2224-5227****ISSN 2518-1483 (Online),****ISSN 2224-5227 (Print)**

Owner: RPA "National Academy of Sciences of the Republic of Kazakhstan" (Almaty)

The certificate of registration of a periodic printed publication in the Committee of Information and Archives of the Ministry of Culture and Information of the Republic of Kazakhstan N 5540-Ж, issued 01.06.2006

Periodicity: 6 times a year

Circulation: 2000 copies

Editorial address: 28, Shevchenko str., of.219-220, Almaty, 050010, tel. 272-13-19, 272-13-18,

<http://nauka-nanrk.kz> / reports-science.kz

© National Academy of Sciences of the Republic of Kazakhstan, 2017

Address of printing house: ST "Aruna", 75, Muratbayev str, Almaty

**REPORTS OF THE NATIONAL ACADEMY OF SCIENCES
OF THE REPUBLIC OF KAZAKHSTAN**

ISSN 2224-5227

Volume 2, Number 312 (2017), 75 – 82

UDC 631.527.02

A. I. Abugaliev^{1,3}, I. Cakmak², A. I. Morgounov³, T. V. Savin⁴¹"Kazakh Research Institute of Agriculture and Plant Growing", Almaty, Kazakhstan,²Sabanci University, Istanbul, Turkey,³CIMMYT, Ankara, Turkey,⁴Kazakh National Agrarian University, Almaty, Kazakhstan.

E-mail: kiz_abugalieva@mail.ru

**THE GRAIN QUALITY CLASSIFICATION OF WINTER WHEAT
GENETIC RESOURCE BY SULFUR AND NITROGEN**

Abstract. The aim of this paper is to determine the status of S (S content and the ratio of N: S) in the grain production and breeding of winter wheat in Kazakhstan. Material: 750 samples of winter wheat cultivars 2009-2014 harvest, wild relatives and introgressive forms. Regions of winter wheat cultivation in sulfur content ranged from 1130 mg/kg (at the level of the deficit) for Zhambyl and Taldy-Korgan to a maximum 1640 mg/kg for the Ily region and the ratio of N:S from 14.9 (Sairam) to 19.6 (Sarkand). The level of S accumulation in the wild relatives grain was for: *Ae. Triaristata* 2404-2565 mg/kg; *Aegilops cylindrica* 2164-2404 mg/kg; *T. militinae* 2190-2330 mg/kg; *T. timopheevi* 1841-2443 mg/kg; *T. kiharae* 2124-2205 mg/kg in comparison with the cultivars in the range of 1452-1836 mg/kg. Introgressive form was characterized by S containing, intermediate between wild and cultivated forms and N:S ratio in these forms of its optimal for wheat bread (no more than 17:1). Thus, the constant line can be adaptive resource of high protein and sulfur. Commercial and perspective cultivars of winter common wheat and regions of their cultivation are classified under the maintenance of sulfur (1005 up to 1818 mg/kg) and to balance N:S (from 13.6 up to 20.9).

Keywords: wheat, wild relatives, quality, sulfur, nitrogen/sulfur.

Introduction. It is known that the nutrient status sulfur (S) of wheat has an important influence on the baking properties of flour (Randall, Wrigley, 1986), which is expressed through the essential role of disulfide bonds to ensure the gluten functionality. The value of S-S bonds correlate with the properties of elasticity and balance S-poor form proteins (ω -gliadins, HMS-glutenin) and S-rich (α , γ -gliadin and glutenin-LMS), including at the level of gliadin biotypes [1].

The results [2] showed that the contents of GMP (Glutenin macropolymer), high molecular weight glutenin subunit (HMW-GS) and low molecular weight glutenin subunit (LMW-GS) were improved by sulphur fertilizer under lower nitrogen (N) condition in both cultivars. Under normal N (240 kg N/ha) conditions, sulphur application improved the contents of HMW-GS, LMW-GS and GMP within sulphur rates from 30-60 kg/ha, while decreased when sulphur rate of 90 kg/ha. It is suggested that appropriate sulphur fertilizer was favourable for the formation of large GMP particles, but too much of it was unfavourable under normal nitrogen condition. Sulphur fertilizer did not significantly affect the number distribution of GMP particles in both cultivars [2].

During the last decades, sulphur (S) deficiency in agricultural soils has become widespread in many European countries [3-9].

Need wheat in sulfur is not so great: about 20 kg S for the average yield of 8 t/ha [10]. Several studies have shown the status of S (S content and the ratio of N: S) as an important factor affecting the baking quality of flour [11]. At the same time A.R. Wooding et al. [12] believe that the baking properties of N: S = 12,5:1 is the optimum, and in > 13:1 additional need for mixing dough. Structural part of the S 1 requires 15 pieces N. If S is in short supply as a result of N fertilizer, the accumulation of non-protein components, such as amides increases the N: S to more than 15:1 [13]. Comparison of the total N and S, and protein

N: S provides useful information on the nutrient balance between N and S in plants and used in the diagnosis of the status of S. There was a trend that decreases with time and content S (1992-1993 - 1,35 mg/g, 1981-1982 - 1.72 mg/g) and N:S increases from 12:1 up to 16:1. S content is limit in second place after N (for example, in the north of Germany) content is critical and scarce S 1,2 mg / g and 17:1 (n: s) [11].

Furthermore, the technological properties of bread wheat are greatly affected by S deficiency [11, 14]. For example, S deficiency has been reported to produce dough that are less extensible and loaves of smaller volume and poorer texture [14-15].

These deterioration in rheological properties of doughs and in breadmaking quality of grain were associated with changes in the quantitative composition of gluten proteins [17-18].

Aim: To determine the status of S (S content and the ratio of N:S) in the grain business and promising varieties of winter wheat in Kazakhstan.

Material and methods: 750 samples of grain of winter wheat of different cultivars from 14 region of Kazakhstan 2009-2014 harvest. Field methods and sampling techniques, according to National standard 13586.3-83, protein content – by Kjeldal method. S content in grain and flour are determined by inductive plasma-atomic emission spectrometry (ICPAES) based Sabanci University Istanbul, Turkey [7].

Results: The S content in the grain of winter wheat ranged from 1005 mg/kg (Krasnovodopadskaya 90 cultivars, Zhambyl) to 1793 mg/kg - Sultan 2, Ili rainfed and 1818 mg/kg for Pamyat 47 variety, in Lenger region (Table 1). Critically low maintenance deficit S (less than 1.2 mg/g – by Zhao [11], it was noted for cultivars Karligash– 1060mg/kg (Zhana-Korgan), 1118 mg/kg for cultivars Zhetysu, Almaly (Krasnogorsk and Taldy-Korgan); Yuzhnaya 12 (Sairam), Nureke 1151 mg/kg (Sarkand). Basically profiled gene pool on the sulfur content in the range characterized 1100-1500 mg/kg (Figure 1).

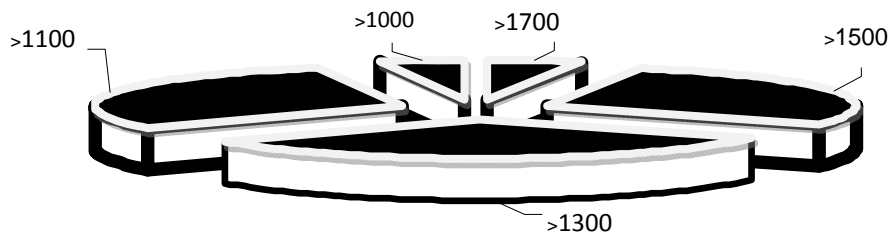


Figure 1 – Distribution of the gene pool of the Kazakhstan varietal winter wheat the sulfur (S) mg/kg.

Regions of winter wheat cultivation in sulfur content ranged from 1130 mg/kg (at the level of the deficit) for Zhambyl, Taldy-Korgan and Zhana-Korgan to a maximum 1640 mg / kg for the Ily region (Table 1) and the ratio of N: S from 14.9 (Sairam) to 19.6 (Sarkand).

According to the S content in wheat grain in deficient regions Zhambyl, Taldy-Korgan, Zhana-Korgan (average regional values), on the minimum values for individual varieties also identified regions Sarkand and Zelenovsky. Ratio of nitrogen/sulfur (N:S) in the grain equals 16, 9-18, 6 for minimum for regions it Sarkand, Zhambyl and further regional Kerbulak (by sulfur (S) content it is not identified as the critical 1237-1393 mg/kg). The mean values of N:S are to deficit regions added Zelenovsky (Western Kazakhstan), Taldy-Korgan and Saryagash. Similarity of the regions on the S content and the ratio of N:S synchronously classification of regions in the whole grain mineral composition according to the result of the cluster analysis (Figure 2). Thus, winter wheat growing regions are differentiated by the ability to accumulate in a different level of grain elements including.

Grain sulfur deficiency in differentiated for cultivars in the region. S content less than 1200 mg/kg noted for third several winter wheat in Kazakhstan. Cultivars Zhadyra, Karlygash, Krasnovodopadskaya 90, Bezostaya 1, Zhetysu, Aliya, Sultan 2 characterized by low levels (less than 1200 mg/kg) in 30-50% of all the researched samples (Table 2). According to a ratio of N:S in winter wheat is characterized by lack of sulfur as a whole, since half of the sample the ratio N:S is in the range of 17:1 to 19:1, and for cultivars Zhadyra, Reke, Aliya is a more than 19:1 ratio (Table 2).

Table 1 – Sand N:S content in winter wheat grain in the regions of Kazakhstan

Region of Kazakhstan	Latitude	Longitude	S, mg/kg		N:S	
			min	max	min	max
Ily (irrigated)	43°48'	77°32'	1511	1703	16,3	17,9
Ily (rained)	43°25'	76°95'	1421	1793	16,7	18,1
Kerbulak	44°88'	77°95'	1237	1393	16,9	18,1
Sarkand 1	43°60'	80°48'	1151	1387	17,7	20,9
Sarkand 2	43°60'	80°48'	1200	1341	18,6	20,9
Zhambyl	42°85'	71°38'	1005	1310	17,9	20,3
Zelenovsky	51°25'	51°28'	1176	1643	14,6	19,0
Taldy-Kurgan	44°92'	78°48'	1118	1304	16,2	17,7
Zhana-Korgan	43°88'	67°23'	1060	1334	13,6	17,3
Sairam 1	42°42'	69°83'	1137	1679	14,2	16,7
Sairam 2	42°42'	69°83'	1256	1671	14,2	17,1
Saryagash	41°45'	69°17'	1320	1568	16,2	18,5
Georgiev	42°28'	69°62'	1219	1489	15,5	18,1
Lenger	42°28'	69°62'	1287	1818	14,8	18,3
Zhualin	42°72'	70°83'	1226	1442	14,7	17,1
Krasnogor	43°37'	75°25'	1118	1631	15,0	18,1

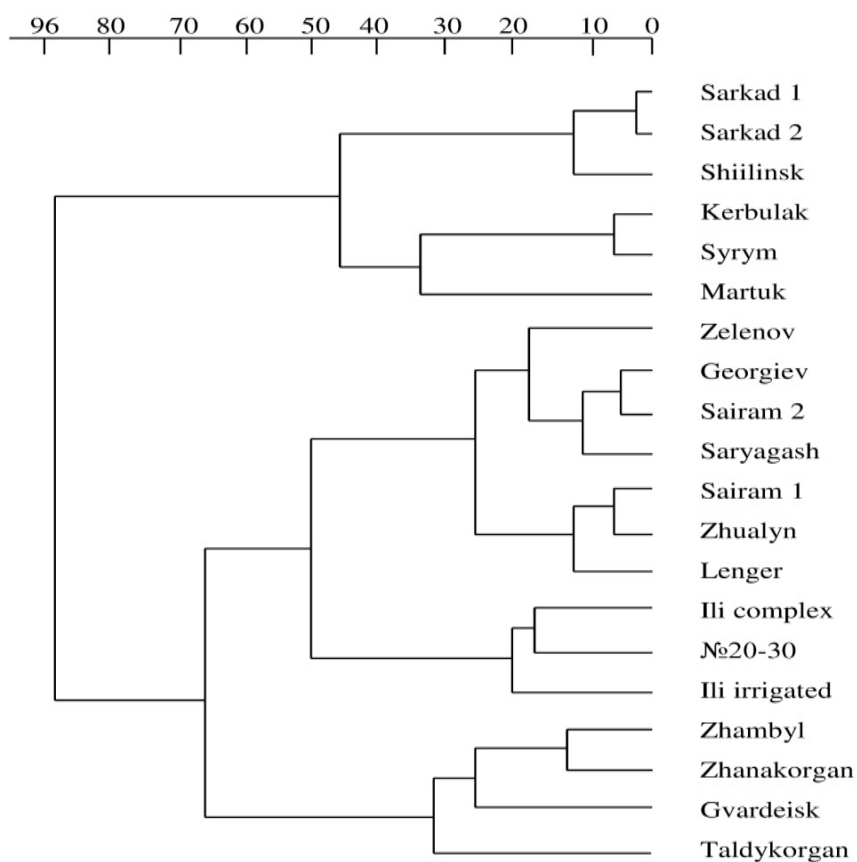


Figure 2 – Classification of Kazakhstan winter common wheat regions on grain mineral content

Table 2 – The characterization of winter wheat cultivars by S and N:S grain content, 2009-2014

Winter wheat Cultivars	S content in the grain, mg/kg		frequency genotypes of the S content, %		N:S content		Genotypes frequency with N:S attitude, %	
			more	less	min	max	17-19	>19
	1800 mg/kg	1199 mg/kg	min	max				
Aktereksкая	1232	1617	-	-	16,1	17,7	-	-
Akdan	1047	1671	-	10	13,6	18,4	12	-
Aliya	1045	1681		34	16,1	20,3	28	27
Almaly	1055	1740	-	22	14,6	20,1	53	17
Bezostaya 1	1024	1630	-	38	15,8	19,4	64	9
Bogarnaya 56	1137	1596	-	20	16,1	18,3	40	-
Bonpen	1332	2066	11	-	16,8	17,0	-	-
Guadelupe	1071	1637	-	33	16,4	16,9	-	-
Egemen	1091	1680	-	17	14,2	19	11	11
Zhadyra	1199	1227	-	50	16,2	19,6	-	50
Zhetysu	1017	1642	-	40	16,6	19,7	62	13
Intensivnaya	1153	1638	-	3	14,8	18,1	50	-
Karlygash	1060	1308	-	50	14,9	17,6	33	-
Kazakhstanskaya 10					16,3	17,9	67	-
Karasay	1286	1650	-	-	14,6	16,3	-	-
Krasnovodopadskaya 90	1005	1667	-	46	15,8	20,2	11	11
Krasnovodopadskaya 97	1060	1631	-	17	15,7	20,5	11	22
Krasnovodopadskaya 210	654	1861	25	-	14,7	16,7	-	-
Mayra	1079	1703	-	16	14,9	20,3	31	12
Naz	1271	1643	-	-	14	19,9	30	20
Nureke	1044	1579	-	23	15,6	20,9	25	25
Odesskaya 120	1180	1387	-	25	16,8	20,1	25	25
Pamyat 47	1270	1598	-	-	14,4	16,9	-	-
Reke	1162	1688	-	10	15,5	19,8	60	30
Ramin	1176	1715	-	6	15,4	19,8	56	22
Sapaly	1221	1539	-		16,9	20,3	44	12
Steklovidnaya 24	1203	1508	-	-	15,9	20,9	60	7
Sultan 2	981	1793	-	29	16,8	17,7	67	-
Tungish	1311	1687	-	-	16,1	17,5	33	-
Erithrospermum 350	1415	1788		33	16,8	17,6	67	-
Yubileynaya 70	1270	1794	-	25	14,7	17,1	25	-

Two cultivars – Sultan2 and Erythrosperrum350 in 33% cases are formed the level more than 1700 mg / kg, in 20-25% cases are Yubileinaya 70 and Pamyat 47cultivars, which are 4.8% of the total researched genofund. Less than 1100 mg/kg S formed in the cultivars grain: Intensivnaya (in 50% of cases), Pamyat 47 and Karasai (28%), Nureke, Yuzhnaya 12, Zhetysu and Akdan (in 13% of cases).S content isimportant for the formationof the protein compositionandgluten quality. Certainlydifferentsoil and climatic conditions, genotypicdifferencesof differentvarietiesof agroecotypescause, a wide range of variability inbothyield andprotein content. Inconnection with it, the role of information about theamountof protein andthe stabilityof its formationas a basis forglutencomplexis great.

To research therelationshipswithmajormacronutrientcontentandquality indicatorsselectedmaterial ofeach varietyafew samplesin several (7-11) testregions. As a result ofa comprehensive studyof the proteincomposition of thegrain of the winterwheatvarieties and hybridswith a maximum valueof proteinandstablebut average; for cultivars Erythrosperrum 350, Yubileinaya70,Karasai. Cultivars Almaly, Naz, Pamyat47andIntensivnayacharacterized by high(but not always stableregions) protein content.

Highly stablegliadincontentin grainvarietiesnotedforErythrosperrum350,Bezostaya1,Karasay. Absolutemaximum ofgliadin content markedoptional forcultivarsAlmaly, Zhetysu, Ramin, Odesskaya120 andSapaly. As a highly stableglutenincontentstoodcultivar isSmuglyanka; andthe absolute maximum (35.5%) was characterized Ramincultivar.

The fact of synchronicityconsistently highprotein contentand its fractionsin the graincultivars Erythrosperrum350, Egemen, Bezostaya1, Ramin, Zhetysuwithincreased accumulation ofiron and zinc, similar to those describedpreviously.Accordingtomultivariate statistical processing systems tall correlation coefficientsbetween the contentof Fe andZnand individualmacronutrients – ZnandMg (+0.73);Cu andFe (+0.73); FeandZn (0.76); Znand P(I 0.74)atwithinspecific regionsof cultivation.

Forregions characterized bydeficiencyof sulfurin the grain the high correlation wasfound betweensulfurandflourstrength(Figure 3).

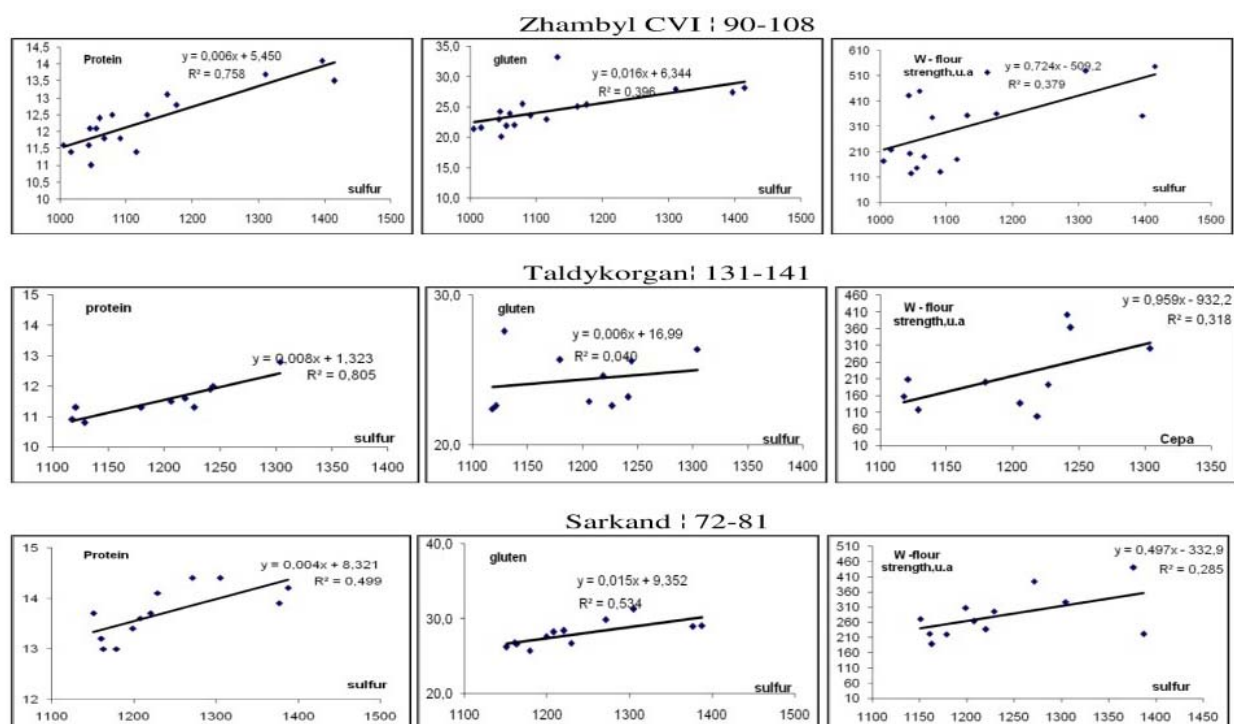


Figure 3 –Correlationbetween the S andprotein, gluten content,flourstrength by alveograph (W), for winter wheat.

Table 3 – Sgrain content of introgressive forms winter wheat (example for 2006-2008)

Winter wheat introgressive forms	S content (mg/kg)			N:S	
	2006	2007	2008	2006	2007
231 (Bezostaya1 x <i>Ae. cylindrica</i>) x Karlygash	1674	1590	1674	16,9	
1712 (<i>Erithrosperrum</i> 350 x <i>Tr.militinae</i>)	1889	1696	1920	16,9	14,8
1718 (F ₈ (<i>Erithrosperrum</i> 350 x <i>Ae. cylindrica</i>) x <i>Erithrosperrum</i> 350)	1942	1643	1781	16,8	15,6
1721 ((F ₇ Bezostaya 1 x <i>Ae.triaristata</i>)x Progress x (<i>T.militinae</i>)) 6	1798	1628-1641	1758	18,1	15,6
1721 ((F ₇ Bezostaya 1 x <i>Ae.triaristata</i>)x Progress x (<i>T.militinae</i>)) 9	1738	1647	1630	19,4	15,2
1721 ((F ₇ Bezostaya 1 x <i>Ae.triaristata</i>)x Progress x (<i>T.militinae</i>)) 4	1769	1604		18,4	16,2
1723 ((F ₇ Bezostaya 1 x <i>Ae.cylindrica</i>)x <i>T.kiharae</i>) x <i>Tr.kiharae</i>)	1992	1999-1757	1717-1922	17,9	16,2
1676 (Steklovidnaya 24 x <i>T.timophevi</i>)	1761	1605		15,2	15,2
1674 (Zhetysu x (F ₇ Zhetysu x <i>T.kiharae</i>) x Almaly)	1615	1801	1925	14,8	14,8
1680 (Steklovidnaya 24 x <i>T.militinae</i>)	1730	1737	—	18,3	16,3
1675 (Zhetysu x <i>Tr.kiharae</i>)	1795	1838	—	17,3	16,5
1825 (Steklovidnaya 24 x <i>Ae.cylindrica</i>)	1866	1607	—	17,3	16,5
1727 (<i>Erithrosperrum</i> 350 x <i>T.kiharae</i>)	1825	1646	—	17,1	16,8
1671 (Zhetysu x <i>T.militinae</i>)	2285	2017-1773	1899-1866	13,7	17,8

Quality characters were significantly correlated to both N and S concentration of grain, but for any given quality character the relationship was strongest with S concentration than with N concentration. SDS and gluten quality parameter were correlated most strongly with both N and S grain concentration. The alveograph W showed a high correlation with S concentration. Correlation between grain N and S concentration, on the contrary, was low, and this is confirmed by the wide variation of the N:S ratio in grain, ranging from 13,6 to 20,5. Lerner et al. [19] suggested that the amino acid composition of storage proteins changes with grain S concentration, so under high S availability the synthesis and accumulation of S-rich storage proteins is favoured at the expense of S-poor proteins. It is reasonable to suggest that these changes in protein composition may be at least in part responsible for the relatively major alterations in quality characters in response to S availability. These results are consistent with those from studies on bread wheat [14, 16].

In this context, provide interest in other types of wheat. Firstly *T.durum* [3] and wild relatives, checklists are widely used in the breeding process for adaptability and increase protein content (nutritional). There was 5 species of researched material: *Aegilops cylindrica*, *Ae. triaristata*, *T.timophevi*, *T.militinae*, *T.kiharae* and constant line F₇-F₈ their crosses with commercial varieties of winter wheat in Kazakhstan (Figure 4).

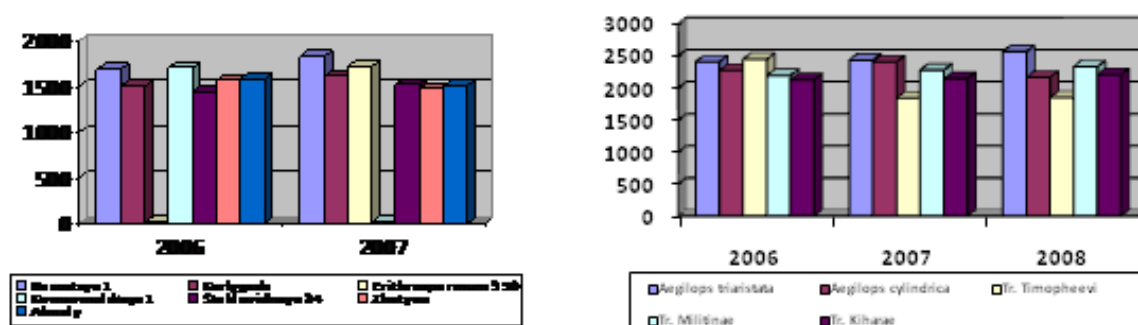


Figure 4 – S content in the grain of winter wheat (left), and in a wild relatives (right)

The level of S accumulation in the wild relatives grain of cultivated forms significantly limit: *Ae. triaristata* 2404-2565 mg/kg; *Aegilops cylindrica* 2164-2404 mg/kg; *T. militinae* 2190-2330 mg/kg; *T. timopheevi* 1841-2443 mg / kg; *T. kiharae* 2124-2205 mg/kg in comparison with the cultivars in the range of 1452-1836 mg/kg. Constant line by crossing wild relatives was characterized by S containing intermediate between wild and cultivated forms (Table 3). N: S ratio in these forms is optimal for wheat bread (no more than 17:1). Thus, the constant line can not only be a adaptive resource forms a high protein. N:S for wild wheat relatives from 12,4 to 15,4:1; for the cultivars from 14,8 to 16,7 in 2007 and from 16,0 to 18,6 in 2006 [20].

Conclusions. Commercial and perspective cultivars of winter common wheat and regions of their cultivation are analyzed and classified under the maintenance of sulfur (1005 up to 1818 mg/kg) and to balance N:S (from 13,6 up to 20,9).

Wild relatives are characterized as a high potential on mineral content in grain, also in S content and the other elements.

Acknowledgments. For Dr. Kozhahmetov K.K. for providing materials of wild relatives in Kazakhstan.

REFERENCES

- [1] Abugalieva A.I., Nadirov B.T., Peruanskiy Yu.V. (1987) Similarities and differences biotypes wheat content of disulfide bonds in gliadin. *Seria. Biol.* 3:35-37.
- [2] S.Yan, Z.Dai, X.Chen, B.Yang, F.Xu, Q.Shao, C.Zhang, W.Li (2016) Effects of sulphur fertilizer on glutenin-macropolymer content and particle size distribution in wheat grain, *Vol. 62, 2016, No. 1: 9-15* Doi: 10.17221/575/2015-PSE
- [3] Laura Ercoli, Leonardo Lulli, Iduna Arduini, Marco Mariotti, Alessandro Masoni (2011) Durum wheat grain yield and quality as affected by S rate under Mediterranean conditions. *Europ. J. Agronomy* 35:63-70.
- [4] Salvagiotti, F., Castellarin, J.M., Miralles, D.J., Pedrol, H.M. (2009) Sulfur fertilization improves nitrogen use efficiency in wheat by increasing nitrogen uptake. *Field Crops Res.* 113, 170-177.
- [5] de Ruiter, J.M., Martin, R.J. (2001) Management of nitrogen and sulphur fertilizer for improved bread wheat (*Triticum aestivum*) quality. *N Z J. Crop Hortic. Sci.* 29, P. 287-299.
- [6] Garrido-Lestache, E., Lopez-Bellido, R.J., Lopez-Bellido, L. (2005) Durum wheat quality under Mediterranean conditions as affected by N rate, timing and splitting, N from and S fertilization. *Eur. J. Agron.* 23. P.265-278.
- [7] Cakmak D., Blagojevic S., Stevanovic D., Jakovljevic M., Mrvic V. (2009) Effect of sulphur fertilization on wheat yield and on nutrient grain content on chernozem in Serbia. *Agrochimica.* №2, P. 92-100.
- [8] Dostalova Y., Hrivna L., Kotkova B., Buresova I., Janeckova M., Sotnikova V. (2015) Effect of nitrogen and sulphur fertilization on quality of barley protein. *Plant. Soil and Environment*, 61:399-404.
- [9] Hrivna L., Kotkova B., Buresova I. (2015) Effect of sulphur fertilization on yield and quality of wheat grain. *Cereal Research Communications*, 43:344-352.
- [10] McGrath S.P., Zhao F.J., Withers P.J.A. (1996) Development of sulphur deficiency in crops and its treatment. *Peterborough*, 379.
- [11] Zhao F.J., Hawkesford M.J., McGrath S.P. (1999) Sulphur Assimilation and Effects on Yield and Quality of Wheat. *J. Cereal Sci.* 30: P.1-17.
- [12] Wooding A.R., Kavale S., Wilson A.J., Stoddard F.L. (2000) Effects of Nitrogen and Sulfur Fertilization on Commercial-Scale Wheat Quality and Mixing Requirements. *Cereal Chem.* 77(6):791-797.
- [13] Flaete, N.E.S., Hollung, K., Ruud, L., Sogn, T., Faergestad, E.M., Skarped, H.J., Magnus, E.M., Uhlen, A.K. (2005) Combined nitrogen and sulphur fertilization and its effect on wheat quality and protein composition measured by SE-FLPC and proteomics. *J. Cereal Sci.* 41, 457-369.
- [14] Randall P.J., Wrigley C.W. (1986) Effects of sulfur supply on the yield, composition, and quality of grain from cereals, oilseeds, and legumes. *Advances in Cereal Sci. and Tech.* Vol.8:171-206
- [15] MacRitchie, F., Gupta, R.B. (1993) Functionality-composition relationships of wheat flour as a result of variation in sulfur availability. *Aust. J. Agric. Res.* 44, 1767-1774.
- [16] Zhao F.J., Salmont S.E., Withers P.J.A., Monaghan J.M., Evans E.J., Shewry P.R., McGrath S.P. (1999) Variation in the Breadmaking quality and Rheological Properties of Wheat in Relation to Sulphur Nutrition under Field Conditions. *J. Cereal Sci.* 30:19-31.
- [17] Wieser, H., Gutser, R., von Tucher, S. (2004) Influence of sulfur fertilization on quantities and proportions of gluten protein types in wheat flour. *J. Cereal Sci.* 40, 239-244.
- [18] Dupont, F.M., Hurkman, W.J., Vensel, W.H., Chan, R., Lopez, R., Tanaka, C.K., Altenbach, S.B. (2006) Differential accumulation of sulfur-rich and sulfur-poor wheat proteins is affected by temperature and mineral nutrition during grain development. *J. Cereal Sci.* 44. P.101-112.
- [19] Lerner S.E., Seghezzo M.L., Molfese E.R., Ponzio N.R., Cogliatti M., Rogers W.J. (2006) N- and S-fertiliser effect on grain composition, industrial quality and end-use in durum wheat. *J. Cereal Sci.* 44, 2-11.
- [20] Abugalieva A.I., Savin T.V., Kozhahmetov K.K., Cakmak I. (2013) Variation in Iron Concentrations among Wild Wheat Relatives and Their Hybrids with Commercial winter varieties. XVII International Plant Nutrition Colloquium & Boron Satellite Meeting, 19-22 August, 2013. Istanbul. Turkey. P. 1028-1029.

А. И. Әбуғалиева^{1,3}, И. Чакмак², А. И. Моргунов³, Т. В. Савин⁴

¹Қазақ егіншілік және өсімдік шаруашылығы ғылыми зерттеу институты, Алмалыбақ, Алматы, Қазақстан,

²Сабанчи университеті, Стамбул, Түркия,

³СИММИТ, Анкара, Түркия,

⁴Қазақ ұлттық аграрлық университеті, Алматы, Қазақстан

КҮЗДІК БИДАЙ ДӘНІНІҢ ҚҰРАМЫНДАҒЫ КҮКІРТ ЖӘНЕ АЗОТ ПЕН КҮКІРТТІҢ ЖАҒДАЙЫ БОЙЫНША ГЕНЕТИКАЛЫҚ РЕСУРС САПАСЫН КЛАССИФИКАЦИЯЛАУ

Аннотация. Зерттеу мақсаты: Қазақстанда келешекті күздік бидай сорттары үшін астық өнеркәсібінде күкірт жағдайын (S құрамы және N:S қатынасынанықтау. Зерттеу әдістерімен материалдары: Қазақстанның 14 ауданынан 2009-2014 жж. өнім күздік бидайының түрлі сорттарынан 750 түр. Күздік бидайды өсіріп-өндіру аудандарында құрамындағы күкірт Жамбыл ауданында 1130 мг/кг. (жеткіліксіз деңгейінде), Талдықорғанда максималды 1640 мг/кг дейін; N:S қатынасы бойынша 14.9:1-ден (Сайрам) 19.6:1 (Сарқанд) дейін сипатталды. Жабайы туыстарда S жинақталу деңгейі *Ae. Triaristata* 2404-2565 мг/кг; *Ae. cylindrica* 2164-2404 мг/кг; *T. militinae* 2190-2330 мг/кг; *T. timopheevi* 1841-2443 мг/кг; *T. kiharae* 2124-2205 мг/кг, сорттармен салыстырғанда 1452-1836 мг/кг диапазон аралығында болды. Жабайы туыстармен будандастырылған қаталар S құрамы бойынша бидайдың жабайы және мәдени түрлер арасындағы аралық жағдайда, N:S қатынасы бидай наны (17:1 көп емес) үшін қалыпты жағдайда. Сонымен, константты түрлер тек жоғары құрамды белокты бейімделгіш ресурс түзбейді. Күздік жұмсақ бидайдың коммерциялық және келешекті сорттарымен оларды өсіп-өндіру аудандары құрамындағы күкірт (1005-1818 мг/кг) және N:S (13.6-20.9) балансы бойынша жүйеленеді.

Түйін сөздер: бидай, жабайы туыстар, сапа, күкірт, азот/күкірт.

А. И. Әбуғалиева^{1,3}, И. Чакмак², А. И. Моргунов³, Т. В. Савин⁴

¹"Казахский научно-исследовательский институт земледелия и растениеводства", Алмалыбақ, Казахстан,

²Университет Сабанчи, Стамбул, Турция,

³СИММИТ, Анкара, Турция,

⁴Казахский национальный аграрный университет, Алматы, Казахстан

КЛАССИФИКАЦИЯ ГЕНЕТИЧЕСКИХ РЕСУРСОВ КАЧЕСТВА ЗЕРНА ОЗИМОЙ ПШЕНИЦЫ ПО СОДЕРЖАНИЮ СЕРЫ И СОСТОЯНИЮ АЗОТА И СЕРЫ

Аннотация. Цель исследований: определение статуса серы (содержание S и отношение N:S) в зерновом бизнесе для перспективных сортов озимой пшеницы в Казахстане. Материалы: 750 образцов зерна озимой пшеницы различных сортов из 14 регионов Казахстана урожая 2009-2014. Регионы возделывания озимой пшеницы характеризовались содержанием серы в Жамбылском регионе в диапазоне от 1130 мг/кг (на уровне дефицита), и Талдықоргане до максимального 1640 мг/кг; для региона Илийский по отношению N:S от 14.9:1 (Сайрам) до 19,6:1 (Сарқанд). Уровень накопления S в диких сородичах находится в пределах: *Ae. Triaristata* 2404-2565 мг/кг; *Ae. cylindrica* 2164-2404 мг/кг; *T. militinae* 2190-2330 мг/кг; *T. timopheevi* 1841-2443 мг/кг; *T. kiharae* 2124-2205 мг/кг в сравнении с сортами в пределах диапазона 1452-1836 мг/кг. Линии, скрещенные с дикими сородичами, занимали промежуточное положение между дикими и культурными формами пшеницы по содержанию S, соотношение N:S в этих формах оптимально для пшеничного хлеба (не более 17: 1). Таким образом, константные линии могут не только образовать адаптивный ресурс с высоким содержанием белка, но и серы. Коммерческие и перспективные сорта озимой мягкой пшеницы и регионы их выращивания классифицируются по содержанию серы от 1005 мг/кг до 1818 мг/кг и баланса N:S от 13,6 до 20,9.

Ключевые слова: пшеница, дикие сородичи, качество, сера, азот/сера.

CONTENT

<i>Poleshchuk O.Kh., Yarkova A.G., Adyrbekova G.M., Ermakhanov M.N., Saidakhmetov P.A.</i> Study of the reaction amination mechanism of the dichloronaphthalene on the basis of the density functional theory.....	5
<i>Omar ZH.O., Takibayev N.ZH., Kurmangalieva V.O.</i> Calculation and analysis of rutherford scattering.....	14
<i>Akhmetov B. B., Korchenko A.G., Tereykovsky I.A., Alibiyeva Zh.M., Bapiyev I.M.</i> Parameters of efficiency estimation of neural networks of cyber attacks recognition on network resources of information systems	19
<i>Proskurova Ya., Gubar S., Kotova E., Kotov A., Datkhayev U.</i> Development of the method for centaury herb identification by thin layer chromatography for the state pharmacopoeia of Ukraine monograph.....	28
<i>Dzhumabaev D.S., Zharmagambetov A.S.</i> Numerical method for solving a linear boundary value problem for Fredholm integro-differential equations.....	36
<i>Shinibaev M.D., Bekov A.A., Rahimganov B.N., Mominov S.B., Sadybek A.G., Alimkulova B.T., Abdrahmanov K.</i> On the existence of two classes of circular orbits of the test body in Hill variables.....	43
<i>Bekesheva K., Zubenko N., Kon G., Kustova T., Islamov R., Ustenova G., Baczek T., Ilin A.</i> Cytotoxicity and acute toxicity of a new compound comprising iodine adducts in mice.....	49
<i>Askarova A.S., Bolegenova S.A., Bolegenova S.A., Maximov V.Yu., Ospanova Sh.S.</i> Investigation of aerodynamics and heat and mass transfer in the combustion chambers of the boilers PK-39 and BKZ-160.....	54
<i>Akhmetzhanov V.K., Shashkin Ch.S., Kaiyrzhanov R.</i> Parkinson's disease. Standards for treatment and rehabilitation of Parkinson's disease.....	60
<i>Avsiyevich V.N.</i> The use of doping in power sports in Kazakhstan: status of the problem and solutions.....	67
<i>Abugalieva A.I., Cakmak I., Morgounov A.I., Savin T.V.</i> The grain quality classification of winter wheat genetic resource by sulfur and nitrogen.....	75

Publication Ethics and Publication Malpractice in the journals of the National Academy of Sciences of the Republic of Kazakhstan

For information on Ethics in publishing and Ethical guidelines for journal publication see <http://www.elsevier.com/publishingethics> and <http://www.elsevier.com/journal-authors/ethics>.

Submission of an article to the National Academy of Sciences of the Republic of Kazakhstan implies that the work described has not been published previously (except in the form of an abstract or as part of a published lecture or academic thesis or as an electronic preprint, see <http://www.elsevier.com/postingpolicy>), that it is not under consideration for publication elsewhere, that its publication is approved by all authors and tacitly or explicitly by the responsible authorities where the work was carried out, and that, if accepted, it will not be published elsewhere in the same form, in English or in any other language, including electronically without the written consent of the copyright-holder. In particular, translations into English of papers already published in another language are not accepted.

No other forms of scientific misconduct are allowed, such as plagiarism, falsification, fraudulent data, incorrect interpretation of other works, incorrect citations, etc. The National Academy of Sciences of the Republic of Kazakhstan follows the Code of Conduct of the Committee on Publication Ethics (COPE), and follows the COPE Flowcharts for Resolving Cases of Suspected Misconduct (http://publicationethics.org/files/u2/New_Code.pdf). To verify originality, your article may be checked by the originality detection service Cross Check <http://www.elsevier.com/editors/plagdetect>.

The authors are obliged to participate in peer review process and be ready to provide corrections, clarifications, retractions and apologies when needed. All authors of a paper should have significantly contributed to the research.

The reviewers should provide objective judgments and should point out relevant published works which are not yet cited. Reviewed articles should be treated confidentially. The reviewers will be chosen in such a way that there is no conflict of interests with respect to the research, the authors and/or the research funders.

The editors have complete responsibility and authority to reject or accept a paper, and they will only accept a paper when reasonably certain. They will preserve anonymity of reviewers and promote publication of corrections, clarifications, retractions and apologies when needed. The acceptance of a paper automatically implies the copyright transfer to the National Academy of sciences of the Republic of Kazakhstan.

The Editorial Board of the National Academy of sciences of the Republic of Kazakhstan will monitor and safeguard publishing ethics.

Правила оформления статьи для публикации в журнале смотреть на сайте:

www.nauka-nanrk.kz

ISSN 2518-1483 (Online), ISSN 2224-5227 (Print)

<http://www.reports-science.kz/index.php/ru/>

Редакторы *М. С. Ахметова, Д. С. Аленов, Т.А. Апендиев*
Верстка на компьютере *А.М. Кульгинбаевой*

Подписано в печать 15.04.2017.

Формат 60x881/8. Бумага офсетная. Печать – ризограф.
5,25 п.л. Тираж 2000. Заказ 2.